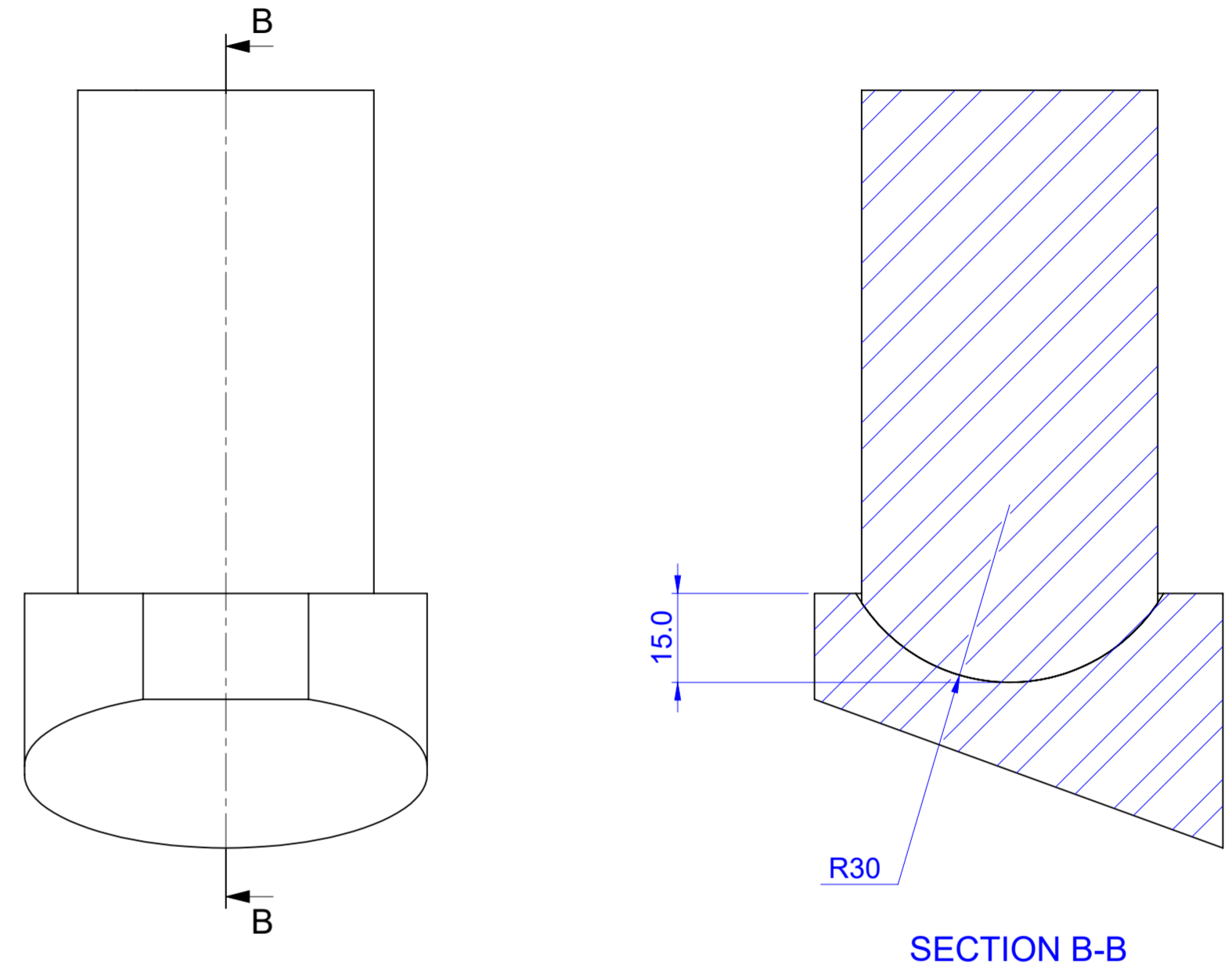
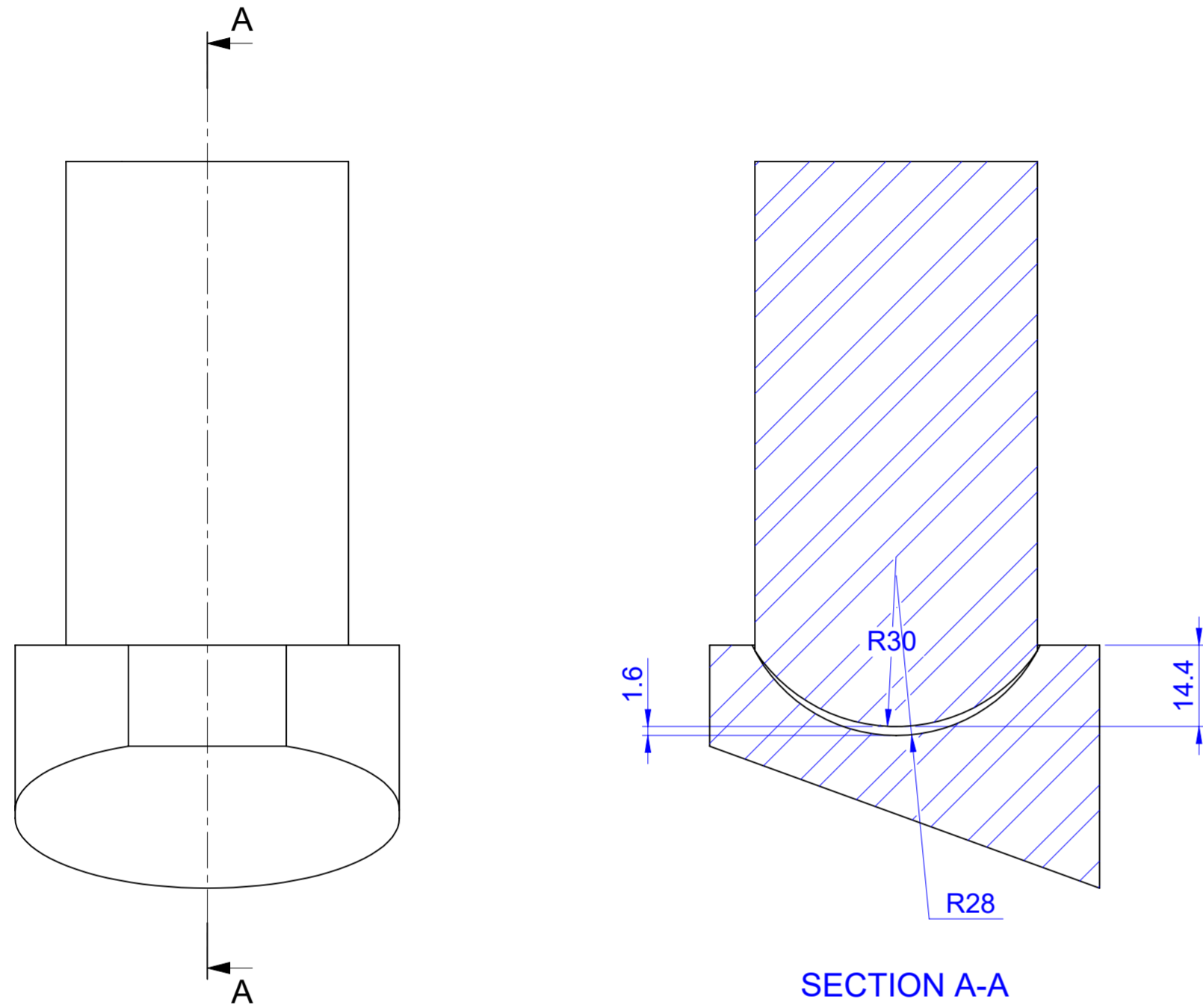


*** IF IN DOUBT ASK ***

*** REMOVE ALL UNNECESSARY SHARP EDGES ***

 THIRD ANGLE PROJECTION




1ST OFF

- R28 (MEASURED BEST WE COULD DO AT THE TIME.
- THE PISTON IS ENTERING TO A DEPTH OF 14.4mm

NEW SIZE FOLLOWING PISTON MEASUREMENT

- REDRAWN 13-09-2021 WITH PISTON MEASURED AT R30
- HOW DEEP DO YOU WANT THE PISTON TO ENTER THE PLASTIC ?
- THE PISTON IS ENTERING TO A DEPTH OF 15mm BUT CAN BE MADE TO SUIT A SIZE OF YOUR CHOOSING

REVISIONS				
REV.	BY	DESCRIPTION	DATE	CHECKED
1	<	ORIGINAL	00/00/00	<

TOLS - UNLESS STATED Whole Nos +/- 0,5 1 Dec 0,0 +/- 0.25 2 Dec 0,00 +/- 0.1 3 Dec 0,000 +/- 0.01 Angles +/- 0,5 deg Screw Holes +/- 0,15 Dowel Holes +/- 0.005 DIMENSIONS IN MILLIMETRES		 ☎: 02920 862 223 ☎: 02920 862 002	JR GILBERT ENG LTD TITLE . . .	
SHEET 1 OF 1			USED ON .	
MAT'L	DRAWN	SCALE	CUSTOMER	
.	.	1:1	.	
HEAT-TREAT	ISSUE	CH'KD	DATE	DRG. No.
.	1	.	13/09/2021	.